

CARDIO EQUIPMENT

new
For 2016

GREEN
Series™

6000 ELLIPTICAL CIR-EL6000-G1

- Cordless - self-powered
- Ergonomic, over-sized footplates
- Easy to use touchpad with quick resistance shifter
- Contact and telemetric heart-rate sensors
- Convenient reading rack/tablet holder
- Low step-up height
- 20" natural stride
- Zinc-dipped anti-corrosion coating for superior rust protection
- Full commercial components on a durable commercial frame



Self Powered Technology



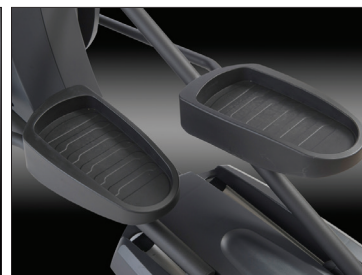
Intuitive, LED console with reading rack/tablet holder



Easy to use touchpad with quick resistance shifter



Large cup & accessories holder



Heavy-duty steel frame with 20" natural stride

Overall Weight	Stride	Width	Length	Height
235 lbs.	20"	27"	80"	70"

FEATURES AND SPECIFICATIONS

Frame: Zinc-dipped, powder-coated steel frame
Power: Self-powered cordless
Stride: 20" natural stride
Certification: CE and generator UL
Color: Matte-black
Resistance Range: 16 levels
Flywheel: 22 lbs.
User Weight: 400 lbs.
Heart Rate Monitoring: Contact and telemetric heart-rate sensors
Transport Wheels: Easy-to-move with front-mounted dual wheels

Display Type: 8 x 16 dot matrix with message window + HR status bar
Display Feedback: Time, distance, heart-rate, watts, RPM, levels, METs, calories
Programs: Manual, rolling, valley, fat burn, ramp, fitness test, random, 4 HRC 4 users, body fat
Standard Features: Hand pulse, quick shift, heart-rate receiver & reading rack/tablet holder
Warranty: 10 years frame, 6 years parts, 2 years wearable items, 1 year labor