

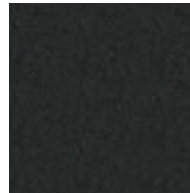
ROOM ACCESSORIES



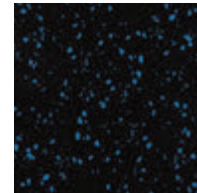
2' SQUARE ECO INTERLOCK TILES

ECO-EL-ECO-00 THRU ECO-EL-ECO-02

- Eco interlocking tiles are a resilient interlocking system that is engineered to protect floors in high use areas, such as corporate gyms and small fitness centers
- Eco interlocking puzzle tiles are extremely durable, portable, and easy to install
- No adhesive is required
- Do it yourself
- Tight fitting, precision cut puzzle edges. Simply lock together
- Ideal choice for smaller fitness applications
- Made in the United States



Black - Solid
ECO-EL-00



Blue - 10%
ECO-EL-01



Grey - 10%
ECO-EL-02

Colors	Width	Length	Thickness
3	2'	2'	5/16"

FEATURES AND SPECIFICATIONS

Wear and Tear: Extremely durable and modular

Absorbent: Sound and shock absorbent

Adhesive: No adhesive required

Tiles: Movable tiles make it easy to handle and relocate

Footing: Provides firm workout footing due to its excellent slip resistance in both wet and dry conditions

LEED Points: Can contribute toward earning up to 12 LEED points