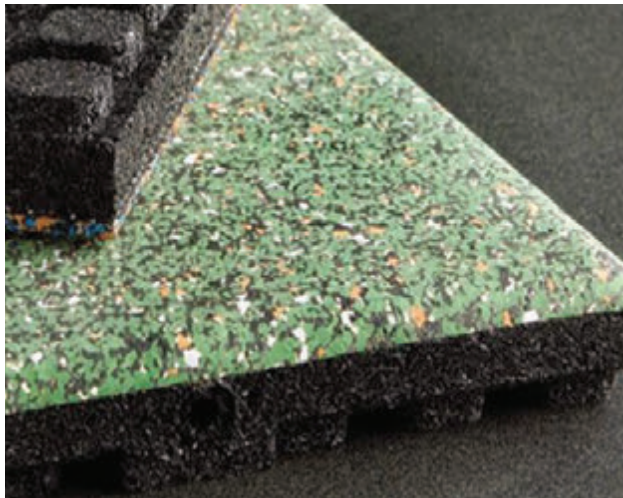


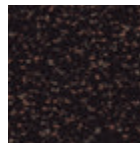
# ROOM ACCESSORIES



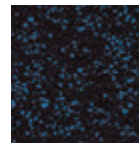
## 2' SQUARE ECO SPA TILES

ECO-EL-SPA-36, 45, 46 OR 47

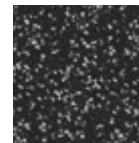
- Spa tiles offer visual excitement to any fitness facility or club interior
- By featuring a pedestal underside, these tiles help prevent cable clutter by routing fitness equipment wiring beneath the surface
- The modular 2' x 2' x 1" tiles can be placed over your existing floor, saving time and money
- No traditional glue down
- These tiles are durable. The 1" thick footed tiles are engineered to provide the ultimate in durability
- Surpass the noise and shock absorption
- Spa tiles can withstand the constant dropping of weights and pounding of equipment
- Made in the United States



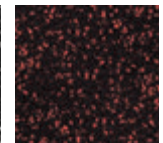
Mixed Brown - 20%  
ECO-EL-36



Blue - 20%  
ECO-EL-45



Grey - 20%  
ECO-EL-46



Red - 20%  
ECO-EL-47

Colors	Width	Length	Thickness
4	2'	2'	1"

### FEATURES AND SPECIFICATIONS

**Wear and Tear:** Extremely durable and modular

**Absorbent:** Sound and shock absorbent

**Adhesive:** No adhesive required

**Tiles:** Pedestal feet hide electrical cords

**Footings:** Provides firm workout footing due to its excellent slip resistance in both wet and dry conditions

**Life Cycle:** Low life cycle costs

**LEED Points:** Can contribute toward earning up to 12 LEED points