



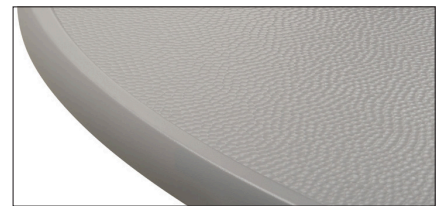
36" SQUARE HAMMER MARINE GRADE POLYMER DINING TABLE

TEL-T93-2W5LEG

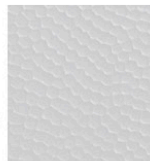
- 36" square x 28.5" H
- Hammer marine grade polymer
- Durable finish resists scratches, chips and peels
- Commercial quality easy to maintain and great value
- Available in various powdered coated finishes
- Umbrella hole



Commercial Warranty: 3 years on frame & top
Retail Warranty: 15 years on frame, 3 years top



Hammered MGP Top Selection



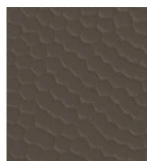
P5M Snow



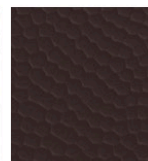
PYM Warm Grey



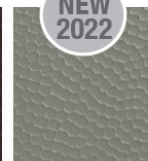
P6M Desert



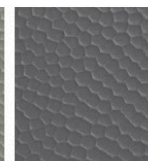
P4M Beachwood



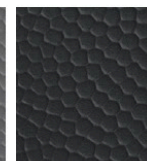
P1M Kona



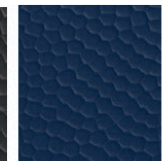
PFM Storm



P3M Classic Graphite



P7M Black



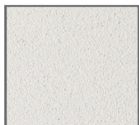
PNM Navy

NEW
2022

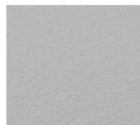
Powdercoat Frame Finish Selection



White



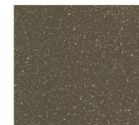
Snow



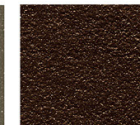
Warm Grey



Desert



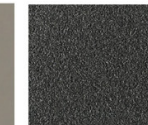
Beachwood



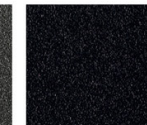
Kona



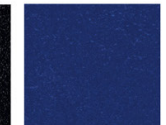
Storm



Graphite



Black



Navy

NEW
2022